



Hudson River Floodplains Update

Community Advisory Group Meeting

Thursday, November 16 2017

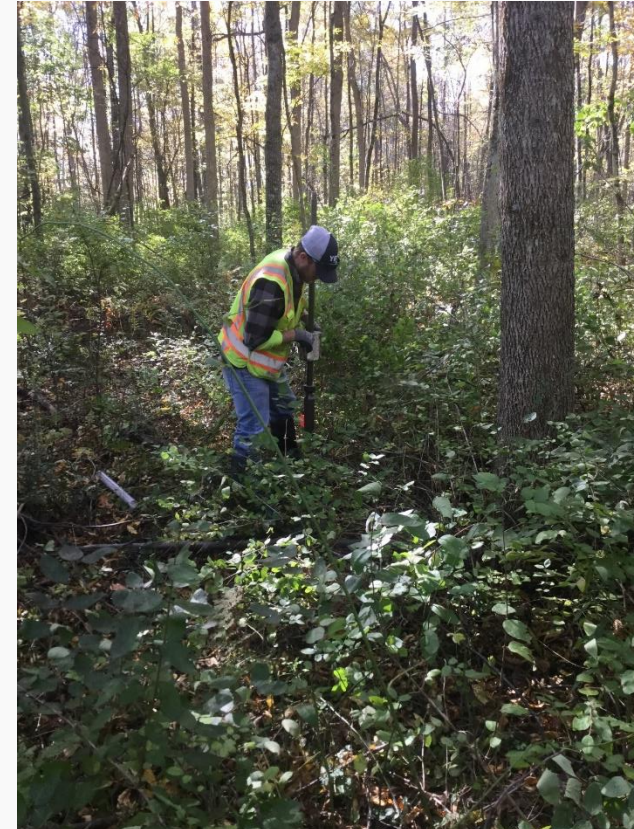
1-4 pm

Saratoga Town Hall

Hudson River Floodplain – Remedial Investigation (RI)



- Remedial Investigation - currently underway
 - Purpose: determine where and at what concentration PCBs are present in the floodplain
 - Project area:
 - ~ 1,700 properties
 - ~ 5,500 acres
 - In general, PCB concentrations decrease with distance from river and distance downstream
 - Sampling is multi-phased process conducted over multiple sampling events
 - To date: over 7,700 samples collected
 - 2017 - soil and standing waters sampling underway



Floodplain Soil Sampling



- Sampling began in early October 2017 and is ongoing
- 340 sample locations targeted on over 150 properties
 - Number of samples determined by statistical analysis (data gap analysis)
- Property access is ongoing
 - Large effort that takes time
- Alternate sample locations sometimes needed
- Sample results will be provided directly to property owners (letter with map showing results)



Standing Water Areas (SWA)



- Standing Water Areas (SWA) being evaluated as part of the RI
- SWA are areas of the floodplain, excluding tributaries, that typically have water year-round
 - Old Champlain Canal is a SWA
- Field verification was done in 2015 and 2016
- 62 SWAs identified on 76 properties
- Sampling began late October 2017
 - Collection of sediment and surface water samples
- Important data related to ecological risk assessment



Near Shore Area



- Near shore being evaluated as part of RI
 - Area between the typical low water level of the river and the “normal” water level
 - Often exposed during summer months
- Focus is on human use areas



Short Term Response Actions (STRA)



- STRAs are protective measures implemented when soil concentrations of PCBs are found to generally exceed 10 ppm.
 - Typically consist of a protective soil cover
 - May be signage if limited human use
 - 66 STRAs implemented to date
- Inspected and repaired annually
- 2017 - GE installed one additional soil cover at a residential property
- As data is collected other STRAs may be implemented
- These actions are considered temporary





- Continued coordination with property owners
 - Provide sampling results to property owners
 - Meet with property owners to discuss results and answer questions (as needed)
- Update and finalize the Floodplain Characterization Report (large data report) with sampling results from this year
- Start Screening Level Ecological and Human Health Risk Assessments
- Identify need for additional sampling based on statistical data gap analysis
- Continue to keep elected officials and CAG up to date on study activities
- Ongoing community involvement efforts
- Continued close coordination with NYSDEC, NYSDOH and NYSCC